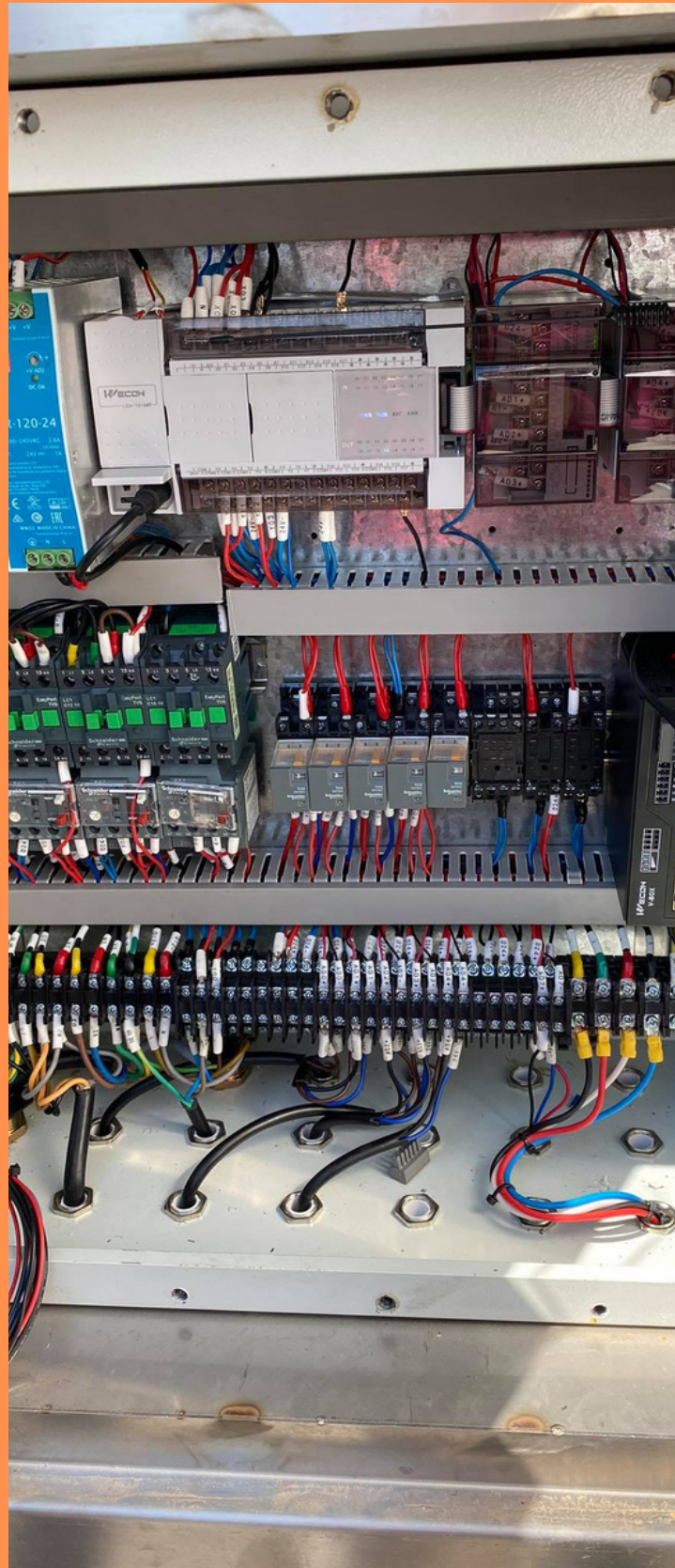




# COA ENERGY



INFORMATION  
HANDBOOK

# TABLE OF CONTENTS

- 01** EQUIPMENT INFO
- 02** OPERATION MANUAL
- 03** OPERATION MANUAL (CONT)
- 04** OPERATION MANUAL (CONT)
- 05** OPERATION MANUAL (CONT)



# EQUIPMENT INFO

## Overview

Our vapor recovery equipment can recycle oil, gasoline, or other fuel vapor and liquidate it back into usable liquid form. Dangerous volatile organic compounds (VOCs) are removed from the atmosphere and become useful fuel. This reduces the risk of explosion by removing volatile explosive gases in addition to helping the environment by reducing carbon output, improving health by removing carcinogenic VOCs from places, and saving money.

## Warranties and A/S

Each purchase of a machine comes with a 1 year warranty that covers all expenses to fix the machine in whatever way COA Energy (Korea and/or US) sees fit. A vast majority of problems are software related. Those are covered by a lifetime warranty. If any mechanical problems need to be fixed, COA will first advise how you can fix it locally (e.g. replacing coolant) which is covered by a lifetime warranty or will come to fix it (free the first year, but at the client's expense from then on).



# OPERATION MANUAL



1

## FAULT INDICATOR

The yellow light will flicker when equipment trouble happens. The fault type will be displayed on the display screen. Press button 10 to remove the fault.

Turn off power if it doesn't work and call the service number.

2

## OIL DRAIN INDICATOR

The indicator light will be on when gasoline is discharged automatically.

The indicator light will go out when the gasoline drain is over.

3

## AIR PUMP INDICATOR

The indicator light will be on when the air pump is working.

The indicator light will go out when the air pump stops.

# OPERATION MANUAL



---

**4**

## MAIN ENGINE INDICATOR

The indicator light will be on when the main engine is working.  
The indicator light will go out when the main engine stops.

---

**5**

## PREHEAT SWITCH

Switch to ON when the ambient temperature is below 0°C.

Switch to OFF when the ambient temperature is above 0°C.

---

**6**

## MANUAL OIL DRAIN SWITCH

This switch can be used when manual oil drainage is necessary.



# OPERATION MANUAL



---

7

## MANUAL OPERATION OF AIR PUMP SWITCH

This switch will be used only in full manual mode.

---

8

## MANUAL OPERATION HOST SWITCH

This switch will be used only in full manual mode.

---

9

## OIL DRAIN MODE SWITCH

Switch to air pump only in case of oil pump discharging failure.(Only Used in emergency mode.)



## 10

### TROUBLESHOOTING OR MANUAL BUTTON

For most models, it turns off the fault light. For some models it is used as a way to turn on the machine before a truck fills.

## 11

### RUN MODE SWITCH

The operation of this equipment is always in automatic mode.

Do not use if not authorized by a COA Energy professional!

## 12

### MOUSE

Navigate the screen menus with the mouse and buttons.



---

**EQUIPMENT INFO**